

LACROSSE

by PIPER



PRICE GUIDE

EFFECTIVE APRIL 18, 2022

DEAR VALUED CUSTOMER:

Thank you for choosing LaCrosse Cooler Company for your underbar needs. For over 60 years, LaCrosse has been recognized by the food service industry for its quality equipment, quick delivery, and modest pricing. Our flexibility and attention to detail ensure that you receive a piece of equipment that meets your specific needs and our use of quality materials ensure that your equipment will last.

We welcome your suggestions or comments. Please call us toll free at 1-800-345-0018.

Lacrosse Underbar Equipment



Terms and Conditions.....	II
Warranty.....	III
Easy Installation.....	IV
General Information.....	V
Using This Price Book.....	VI
Ice Chests.....	1
Mixing Stations.....	2
Pass Thrus and Overshelves.....	4
Sinks.....	5
Cabinets.....	6
Glass Racks.....	7
Bottle Storage.....	8
Beer Storage.....	10
Add-Ons.....	11
Drainboards and Drink Rails.....	14
Filler Sections, Chases, and Soda Gun Holders.....	15
Drop-In Ice Chests.....	16
Drop-In Sinks.....	17
Shelves.....	17
The StowAway® Portable Bar.....	18
Accessories.....	19
Custom Configurations.....	20
Factory CAD Drawings.....	21
Bar Layout Examples.....	22

Important Cleaning Information

1. Use only soft cloths or plastic scouring pads.
2. Do not use steel wool pads, wire brushes or scrapers.
3. Use Alkaline, Alkaline Chlorinated or Non-Chloride cleaning agents that are recommended for use with Stainless Steel.
4. Do not use cleaning agents containing Chlorides or Quaternary Salts.
5. Rinse thoroughly with water and wipe dry after using any cleaning agents.
 - Never use Hydrochloric Acid (Muriatic Acid).
 - Never soak dirty rags, leave foreign matter or cleaning agents in bowl or on equipment overnight.
6. Failures caused by product misuse or wrongful cleaning practices will void warranty.

Terms and Conditions

Prices:

All merchandise will be billed at our current published prices in effect.

Performance:

All shipping estimates are made with the expectation that shipment will go forward as specified. However, fulfillment is always subject to availability of material and to conditions affecting shipment that are beyond our control. We shall not be held liable for any delay in performance due to reasons beyond our control.

Shortages:

Claims for shortage must be brought to our attention within five (5) days of receipt, and must be noted upon receipt with the carrier.

Cancellations:

Cancellations are not accepted on orders once production has begun. No cancellations are accepted on custom jobs. Approved cancellations will be subject to a minimum 15% restocking charge.

Returns:

No merchandise will be accepted without written authorization from LaCrosse.

Only product that can be applied to current orders will be approved for return. Once authorization is received, merchandise must be returned within thirty (30) days or credit will not be issued.

Merchandise being returned must be shipped PREPAID and is subject to a minimum 25% handling charge. Refurbishing charges extra. Return authorization number or form must accompany carton.

Custom:

Orders that are custom or require alterations are subject to a down payment. Down payments must be received before work will begin.

Prints and Drawings:

All drawings submitted with orders will be accepted as correct and processed in the order they were received. Errors arising from drawings submitted will be the responsibility of the customer. No cancellations accepted on orders for merchandise built to your specifications. LaCrosse has a tolerance of +/- 1/8" on all drawing measurements due variance in manufacturing processes.

Concealed Damages:

When unpacking merchandise and finding damage, customer must call carrier without further unpacking; have them file a report of concealed damage. Customer must then file a claim with the carrier at once. If containers show rough handling, do not give carrier a clear receipt.

Order Approval:

All orders are subject to final approval by the factory. Acceptance and/or performance is subject to the approval of our credit department. Minimum order \$25.00 list.

Order Acknowledgements:

An order acknowledgement is sent for every order we receive. Please review this acknowledgement carefully. It is the customer's responsibility to verify all information and notify us immediately of any errors. The acknowledgement will include the anticipated shipping date based on the date the order was received.

Shipping:

Freight is F.O.B. factory, net prices subject to any sales or other tax which might be imposed and to the terms and conditions in effect when shipped. The right is reserved to change prices without notice. Payable in U.S. funds. All prices net thirty (30) days to credit qualified dealers. F.O.B. Wausau, WI.

Limited Warranty

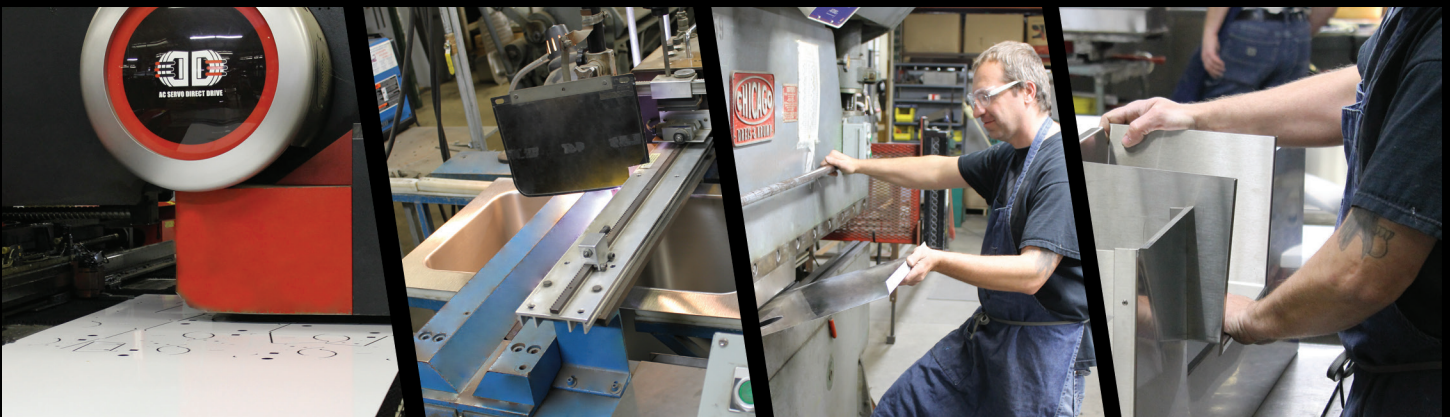
LaCrosse extends a limited warranty to the original user on the products it manufactures. All products are under warranty to be free of original defects, material or workmanship, under normal use and service for a period of one (1) year from date of shipment. Proof of purchase must accompany all warranty claims. Parts will be replaced or repaired at the company's option on a no-charge basis (except for labor). Inspection by and at the LaCrosse factory, of parts claimed defective, shall be final in determining warranty status. The manufacturer is not responsible for any damage or business loss of any kind resulting from a defect in the unit, or for any charges related to the removal of a defective unit or installation of a replacement unit.

This warranty shall be considered VOID if: the unit is installed by someone other than a licensed plumber or not in accordance with local code; the unit is altered or modified; the unit has any accessory parts attached which are not recommended or installed by the manufacturer; **THE UNIT IS CLEANED With CHEMICALS OR DETERGENTS NOT IN ACCORDANCE With THE MANUFACTURER'S DIRECTIONS OR NOT RECOMMENDED FOR USE ON STAINLESS STEEL.**

EXCLUSIVE REMEDY. If the goods purchased in connection with this document are returned by Purchaser FOB, LaCrosse's Onalaska plant pursuant to written authorization and instructions from LaCrosse within the applicable warranty period set forth above and such goods are found to be defective by LaCrosse under one of the applicable foregoing Limited Warranties, LaCrosse will at its sole election either (a) repair or replace such defective goods at LaCrosse's cost or or (b) accept the return of such defective goods at the invoice price of such goods for a credit.

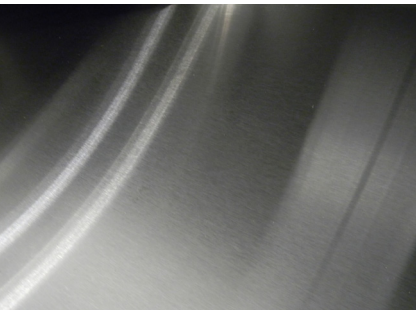
THE WARRANTY SET FORTH ABOVE IS THE EXCLUSIVE WARRANTY PROVIDED BY LACROSSE, AND ALL OTHER WARRANTIES, INCLUDING ANY IMPLIED WARRANTIES OR MERCHANTABILITY OR FITNESS FOR A PARTICULAR PURPOSE, ARE EXPRESSLY DISCLAIMED. IN THE EVENT ANY IMPLIED WARRANTY IS NOT HEREBY EFFECTIVELY DISCLAIMED DUE TO OPERATION OF LAW, SUCH IMPLIED WARRANTY IS LIMITED IN DURATION TO THE DURATION OF THE APPLICABLE WARRANTY STATED ABOVE.

THE REMEDIES SET FORTH ABOVE ARE THE SOLE AND EXCLUSIVE REMEDIES AVAILABLE HEREUNDER. LACROSSE WILL NOT BE LIABLE FOR ANY INCIDENTAL OR CONSEQUENTIAL DAMAGES DIRECTLY OR INDIRECTLY RELATED TO THE SALE, HANDLING OR USE OF THE EQUIPMENT, AND IN ANY EVENT LACROSSE'S LIABILITY IN CONNECTION With THE EQUIPMENT, INCLUDING FOR CLAIMS BASED ON NEGLIGENCE OR STRICT LIABILITY, IS LIMITED TO THE PURCHASE PRICE THEREFORE.



Serving up quality underbar equipment and easy installation

QUALITY EQUIPMENT



304 Stainless Steel Construction



NSF Approved



Low Lead Compliant Faucets



Soldered and Siliconed Seams



Cross Brace Leg Construction with Adjustable Feet



Handcrafted by Skilled Workers

Customize to fit any space! Contact the factory for a quote!



EASY INSTALLATION

LaCrosse makes things easy every step of the way, cutting down on installation time and cost! Our products arrive almost fully assembled, and are ready to use in three easy steps.

1



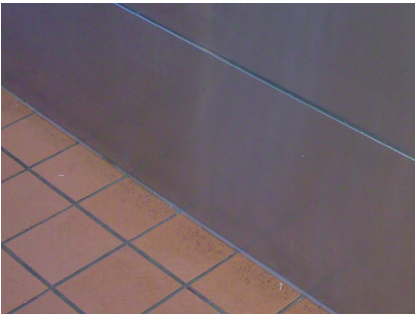
Unbox and install legs & faucets.

2



Place, level & plumb.

3



Secure & seal.

It's as easy as that!

General Information

Three distinct family groups:

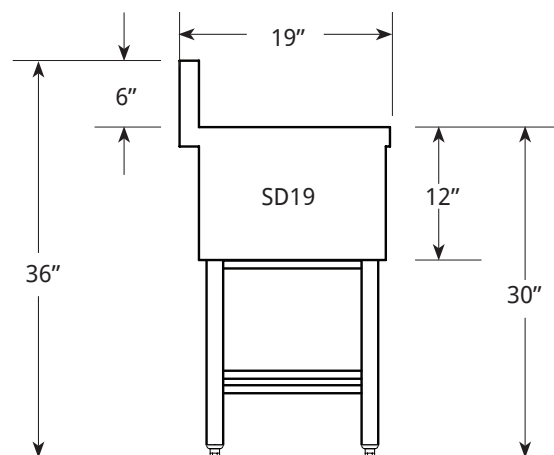
The end view drawings provide general overall dimensional information. Further details are available from published specification sheets or can be obtained from the factory.

SD19

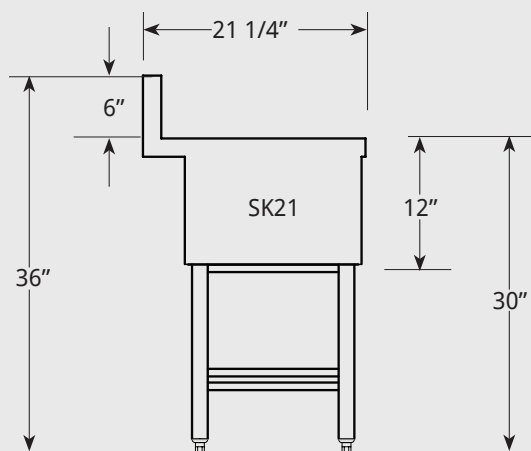
Features:

19" Front to Back with a 6" High Backsplash.

- 304 Stainless Steel Front Aprons and Ends
- Painted Galvanized Legs
- Splash Mount Faucet
- 1 3/4" Backsplash Allows for Plumbing Clearance



SK21



Features:

21 1/4" Front to Back with a 6" High Backsplash.

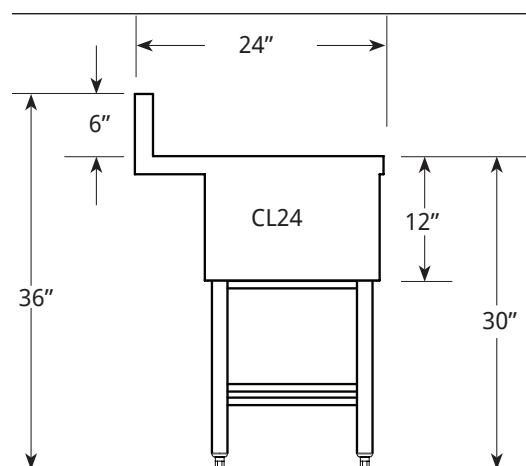
- 304 Stainless Steel Front Aprons and Ends
- Painted Galvanized Legs
- Splash Mount Faucet
- 1 3/4" Backsplash Allows for Plumbing Clearance

CL24

Features:

24" Front to Back with a 6" High Backsplash.

- 304 Stainless Steel Front Aprons and Ends
- 304 Stainless Steel Legs
- Deck Mount Faucet
- 1 3/4" Backsplash Allows for Plumbing Clearance



USING THIS PRICE BOOK

All pricing is list pricing in this catalog.

Once you have determined the length required, go to the pricing table and select the family group (SD, SK or CL). Then determine complete model number and list price.

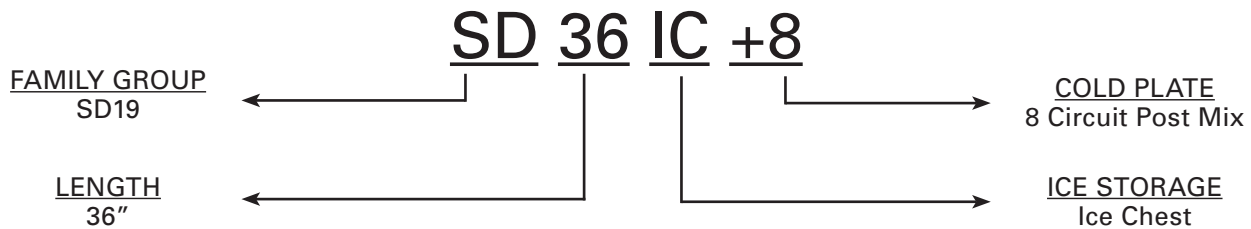
Example:

Description	Unit Length	Weight	SD19	List Price	SK21	List Price
Ice Chests:	6'	35 lbs.	SD6IC	\$1,054		
	12"	40 lbs.	SD12IC	\$1,276		
	18"	45 lbs.	SD18IC	\$1,441		
	24"	50 lbs.	SD24IC	\$1,541	SK24IC	\$1,685
	30"	55 lbs.	SD30IC	\$1,678	SK30IC	\$1,765
	36"	60 lbs.	SD36IC	\$1,856	SK36IC	\$1,875

Lacrosse model numbers

Underbar Sinks, Deli Units and Drop-In Sinks are indicated in feet when referring to length.

Example:



Mixing Stations are indicated in feet and inches. Ice Chests, Cold Plates, Drainboards, Pass Thrus, Cabinets, Add-Ons, Glass and Liquor Storage Racks and Speedrails are indicated in inches.

Example:



LEAD TIME

STANDARD 10 BUSINESS DAY LEAD TIME



Need product quicker?
Ask about our Quick Ship program for catalog items!
Don't miss a date!

ICE CHESTS



Standard Features:

- Includes Stainless Steel Sliding Cover
- 11" Deep Ice Bin
- 12" Front Apron with 18" Legs

Options:

- Bottle Storage Tray
- Backsplash Cutout Options Available. Contact Factory for a Quote.
- 14" Extra Deep Ice Bin

Product Details:

- 6" Unit Designed to Attach to Adjacent Units (No Legs)
- 18" Only Available with 4 Circuit Cold Plate
- 24"-48" Available with 8 or 10 Circuit Cold Plate
- Units with Sealed-in Cold Plates have 15" Front Aprons and Utilize Shorter (15") Leg Assemblies to Maintain Standard Overall Heights

Description	Length	Weight	SD19	List Price	SK21	List Price
Ice Chests:	6'	35 lbs.	SD6IC	\$1,054		
	12"	40 lbs.	SD12IC	\$1,276		
	18"	45 lbs.	SD18IC	\$1,441		
	24"	50 lbs.	SD24IC	\$1,541	SK24IC	\$1,685
	30"	55 lbs.	SD30IC	\$1,678	SK30IC	\$1,765
	36"	60 lbs.	SD36IC	\$1,856	SK36IC	\$1,875
	48"	65 lbs.	SD48IC	\$2,072	SK48IC	\$2,260
Cold Plates	18"	35 lbs.		4 Circuit Cold Plate		Add \$2,015
	24"-48"	45 lbs.		8 Circuit Cold Plate		Add \$2,152
	24"-48"	45 lbs.		10 Circuit Cold Plate		Add \$2,301

Accessories:

Bottle Tray	
L130-12002	\$75
Ice Chest Divider	
L240-10024 Std.	\$170
L240-112813A Extra Deep	\$202
Stainless Steel Legs (Upcharge)	
L400-99C15-S - 15" Height	\$338
L400-99S18-S - 18" Height	\$338
14" Deep Ice Bin (Upcharge)	
24" Bin	\$648
30" Bin	\$779
36" Bin	\$779
48" Bin	\$846

ICE CHEST WITH BOTTLE WELLS



Standard Features:

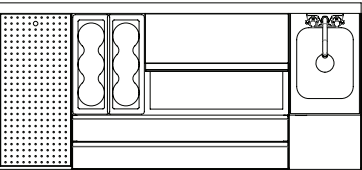
- Includes Stainless Steel Sliding Cover
- 24" or 30" Ice Chest
- 10 Circuit Cold Plate
- 12" Insulated Side Bin
- Bottle Storage Trays (2)
- 15" Front Apron with 15" Legs

Description	Length	Weight	Model	List Price
Ice Chests with Bottle Wells:	36'	110 lbs.	SD36-24CT (L,R) +10	\$4,513
	42"	120 lbs.	SD42-30CT (L,R)+10	\$4,736
	48"	130 lbs.	SD48-24CTC+10	\$5,336

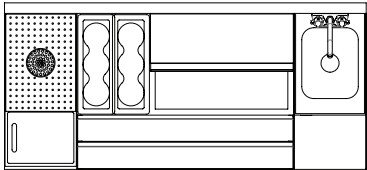
MIXING STATIONS



*Shown with bottle storage display MS5-36CTCHSRBDL+10



MS5-36CTCHSRGRL Perforated Drain Board



MS5-36CTCHSRDPL GLASS RINSER/CUTTING BOARD

Description	Length	Weight	Model	List Price
Mixing Station	60"	180 lbs.	MS5-36CTCHSRBDL+10	\$8,957
	60"	180 lbs.	MS5-36CTCHSRGRL+10	\$8,182
	60"	180 lbs.	MS5-36CTCHSRDPL+10	\$8,179

Standard Features:

- Includes Stainless Steel Sliding Cover
- 11" Deep Ice Bin
- 28" Front of Rail to Back
- 15" Front Apron with 15" Legs
- Low Lead Compliant Faucet
- 24" Ice Chest
- 10 Circuit Cold Plate
- 12" Insulated Bin for Bottle Storage
- Bottle Storage Trays (2)
- 12" Handsink with 9 3/4" Deep Sink Bowl
- 12"x9" Blender Shelf
- 6" Splash Guard

Options - Choose from:

- 12" Bottle Storage Display (Shown on Left)
- 12" Perforated Drainboard
- 12" Glass Rinser/Cutting Board Combo

Accessories:

- 5 Compartment Condiment Tray
L500-10564 \$964
- Stainless Steel Legs (Upcharge)
L400-99C15-S - 15" Height \$338

ICE CHEST STATION WITH BUILT-IN BLENDER SHELF

Standard Features:

- Includes Stainless Steel Sliding Cover
- 11" Deep Ice Bin
- 21" Front to Back
- 15" Front Apron with 15" Legs
- 24" Ice Chest
- 12"x9" Built-In Blender Shelf
- 10 Circuit Cold Plate

Optional:

- Perforated Basket



Description	Length	Weight	Model	List Price
Ice Chest Blender Station Combo	48"	125 lbs.	SK4-24ICLBHSR+10	\$6,173
	48"	125 lbs.	SK4-24ICRBHSL+10	\$6,173

Accessories:

- Stainless Steel Legs
L400-99C15-S - 15" Height . . . \$456
- Perforated Basket
L500-11963..... \$362

MIXING STATIONS CONTINUED



- Standard Features:**
- 304 Stainless Steel Welded and Polished Top Assembly, Front and Ends
 - 24" Front of Rail to Back
 - 15" Front Apron
 - Ice Chest with Built-In 10 Circuit Cold Plate
 - Separate Insulated Side Bins with Bottle Trays (2)
 - Soda Line Chase Provided Behind Each Side Bin
 - Includes 304 Stainless Steel 24" Keyhole Speedrail and Sliding Cover
 - Cabinet Base with Locking Door
 - Die-Cast Heavy Duty 6" Stainless Steel Equipment Legs with Adjustable Feet

Description	Length	Weight	Model	List Price
Cockpit Mixing Station	36"	150 lbs.	MS36-24CTC+10	\$7,586

- Accessories:**
- 36" Front Speedrail
L500-98036..... \$186

MIXING STATION CABINET

- Standard Features:**
- 24" Front to Back
 - 6" Deep Sink Bowl
 - Low Lead Compliant Faucet
 - Glass Rinser with Perforated Pan
 - High-Density, Non Porous Surface (NSF)
 - Dipperwell
 - Locking Cabinet Door
 - 6" Stainless Steel Equipment Legs
 - 1 1/2" Drain



Description	Length	Weight	Model	List Price
Mixing Station	24"	80 lbs.	MS2-HSGR	\$3,979

PASS THRU AND OVERSHELVES



PT44HSRCL+10

Standard Features:

- Includes 3 pc. Stainless Steel Sliding Cover
- 11" Deep Ice Bin
- 42" Front to Back
- Cold Plate Units have 15" Front Apron and Sides
- 44" and 72" Combo Units Include Dual Handsink with Low Lead Compliant Faucets
- 6" Splash Guard Between Sink and Ice Bin
- 8 Circuit Cold Plate (+8)

Options:

- Upgrade from an 8 Circuit Cold Plate (+8) to a 10 Circuit Cold Plate (+10) for Minimal Upcharge
- Blender Shelf
- Speedrails
- Skirting to Hide Leg Assembly

Accessories:

Blender Shelf	
L500-10558.....	\$238
Speedrails	
L500-44 GSR-2.....	\$572
Stainless Steel Skirting	
44" Use L500-11970	\$511
72" Use L500-12273	\$892

Description	Length	Weight	Model	List Price
Pass Thru Bin	36"x24"	60 lbs.	PT36	\$2,780
		110 lbs.	PT36+8	\$4,849
Combo Pass Thru	44"x42"	350 lbs.	PT44HSRCL+8	\$8,213
	72"x42"	500 lbs.	PT72HSCICRL+8	\$12,287
Cold Plate		10 Circuit Cold Plate Upcharge		\$197

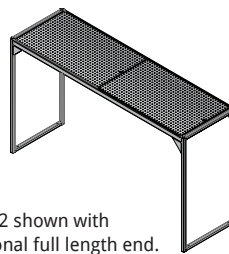
PASS THRU OVERSHELVES

Standard Features:

- 304 Stainless Steel & 1" Square Tube Construction
- 42" Height on Single Overshelf
- 22" Wide Shelf
- Removable Perforated Pan Inserts
- Comes with Drain and 8 Foot Drain Tube
- Designed to Bolt to Floor

Options:

- Single Overshelves Designed to be Attached to the End of a Bar. For a Full Length Leg that can be Mounted to the Floor, Note as "Full". Contact Factory.
- Stainless Steel Solid End Panel to Attach to Square Tube. Contact Factory.
- Custom Sizes Available. Contact Factory.



*SS72 shown with optional full length end.



*SS101 shown with optional end panel.



Description	Length	Weight	Model	List Price
Single Overshelf*	74"	90 lbs.	SS74	\$3,926
	101"	115 lbs.	SS101	\$4,771
	104"	125 lbs.	SS104	\$5,635
Double Overshelf	46"	100 lbs.	DS46	\$3,856

SINKS



Standard Features:

- Deep-Drawn Sink Bowls 10"x14"x9 3/4"
- Includes Low Lead Compliant Faucets
- 304 Stainless Steel Front Apron and Ends
- 30" Working Height
- 1 1/2" Drain with Overflow Tubes
- Specify Left, Right, or Center with Model when Ordering (ie. SD53C)

Options:

- 36" Working Height Available on Select Models (*) with 3" Drain

Accessories:

36" Working Height (Upcharge)

L400-99D24-S.\$338

Stainless Steel Legs (Upcharge)

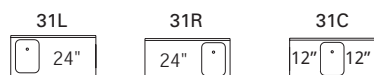
L400-99S18-S.\$338

Perforated Basket

L500-11963.\$362

Description	Length	Weight	SD19	List Price	SK21	List Price
One Compartment	3 ft.	50 lbs.	SD31 (L,R,C)	\$2,334	SK31 (L,R,C)	\$1,973
Two Compartment	2 ft.	50 lbs.	SD22	\$2,391	SK22	\$2,491
One Faucet	3 ft.	55 lbs.	SD32 (L,R)	\$2,319	SK32 (L,R)	\$2,452
	4 ft.	60lbs.	SD42 (L,R,C)	\$2,920	SK42 (L,R,C)	\$2,814
Three Compartment	3 ft.	55 lbs.	SD33	\$2,648		
One Faucet	4 ft.	65 lbs.	SD43 (L,R)	\$3,222	SK43 (L,R)	\$3,088
	5 ft.	70 lbs.	SD53 (L,R,C)*	\$3,430	SK53 (L,R,C)	\$3,522
	6 ft.	80 lbs.	SD63 (L,R,C)*	\$3,660	SK63 (L,R,C)	\$3,671
	7 ft.	85 lbs.	SD73 (L,R,C)	\$3,549		
Four Compartment	4 ft.	65 lbs.	SD44	\$3,576	SK44	\$3,427
Faucets	6 ft.	85 lbs.	SD64 (L,R,C)*	\$3,950	SK64 (L,R,C)	\$4,166
	7 ft.	90 lbs.	SD74 (L,R,C)*	\$4,145	SK74 (L,R,C)	\$4,318

One Compartment



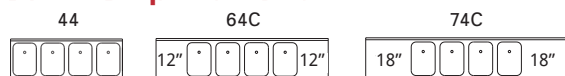
Two Compartment



Three Compartment



Four Compartment



CABINETS

STORAGE CABINETS



Standard Features:

- 304 Stainless Steel Cabinet
- Removable Perforated Pan Top with Drain
- Locking Cabinet Door
- 6" Stainless Steel Equipment Legs
- Plumbing Access Holes Provided

Options:

- Set of (4) 5" Casters
(Replaces 6" Legs, Two Rigid and Two Swivel - Factory Installed)
- Removable Adjustable Shelf

Accessories:

Set of 4 Casters
L550-112814 \$186

Removable Shelf
L400-12071-18 \$249

L400-12071-24 \$272

L400-12071-36 \$295

Description	Length	Weight	Model	List Price
Cabinet	18"	60 lbs.	CLP-CAB18	\$2,199
	24"	70 lbs.	CLP-CAB24	\$2,378
	36"	80 lbs.	CLP-CAB36	\$2,876

CHEMICAL STATION

Standard Features:

- 304 Stainless Cabinet with Open Front
- 6" Deep Removable Chemical Pan with Handle
- 10"x12"x6" Deep Sink Bowl
- Low Lead Compliant Faucets
- Removable Shelf for Storage (24" Only)
- 6" Stainless Steel Equipment Legs
- Recessed Top

Description	Length	Weight	Model	List Price
Chemical Station	12"	40 lbs.	CL12HS-CS	\$2,518
	24"	65 lbs.	CL24GR-CS	\$2,826



CL24GR-CS

POINT OF SALE STATION



Standard Features:

- 304 Stainless Steel Cabinet
- Locking Louvered Door for Ventilation
- 1 1/2" Grommet on Top for Cords
- 11" Splash Guards on Left and Right
- 6" Stainless Steel Equipment Legs
- Open Area on Back of Unit to Run Cords

Description	Length	Weight	Model	List Price
Point of Sale	18"	70 lbs.	CL18POS	\$2,479
	24"	80 lbs.	CL24POS	\$2,598

GLASS RACKS



*Shown with optional shelves.

Standard Features:

- 304 Stainless Steel Cabinet
- Removable Perforated Pan Top with Drain
- Standard with Slide Rails
- Holds 3 Glass Racks
- 6" Stainless Steel Equipment Legs

Options:

- Locking Cabinet Doors
- Set of (4) 5" Casters
(Replaces Legs Two Rigid and Two Swivel - Factory Installed)
- Removable Shelves

Accessories:

Locking Cabinet Door \$421

Set of 4 Casters

L550-112814 \$186

Removable Shelf

L400-12071-12 \$214

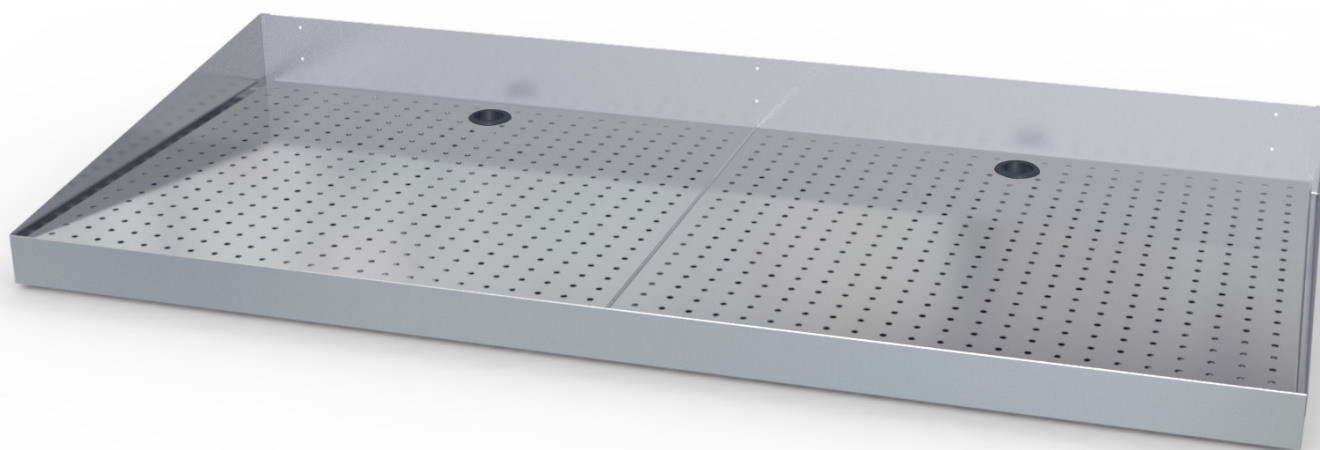
L400-12071-18 \$249

L400-12071-24 \$272

L400-12071-36 \$295

Description	Length	Weight	SK21	List Price	CL24	List Price
Smooth Top	24"	70 lbs.	SK24GR	\$2,041	CL24GR	\$2,090
with Perforated Pan	12"	50 lbs.			CL12GR-DB	\$2,049
	18"	60 lbs.			CL18GR-DB	\$2,184
	24"	70 lbs.	SK24GR-DB	\$2,163	CL24GR-DB	\$2,283

DRYING RACK



Standard Features:

- Counter Top Drying Pan
- Removable Perforated Pan with Drain
- 5" Backsplash

Description	Length	Weight	Model	List Price
Counter Drying Pan	24"	30 lbs.	SKP24	\$1,144
	42"	35 lbs.	SKP42	\$1,404
	48"	40 lbs.	SKP48	\$1,707

BOTTLE STORAGE

BOTTLE STORAGE ON 15" LEGS



- Standard Features:**
- 304 Stainless Steel
 - Five Descending Storage Steps
 - Splash Guards on Left and Right
 - Built-In Step Straps Included with Unit
 - 15" Stainless Steel Equipment Legs with Adjustable Feet

Description	Length	Weight	Model	List Price
Bottle Display with 15" Legs	12"	30 lbs.	CL12BSD-C15-S	\$2,045
	18"	40 lbs.	CL18BSD-C15-S	\$2,250
	24"	50 lbs.	CL24BSD-C15-S	\$2,379

BOTTLE STORAGE ON 6" LEGS

- Standard Features:**
- 304 Stainless Steel
 - 5 Descending Storage Steps
 - Splash Guards on Left and Right
 - Built-In Step Straps Included in Unit
 - 6" Stainless Steel Equipment Legs
- Options:**
- Set of (4) 5" Casters
(Replaces 6" Legs, Two Rigid and Two Swivel - Factory Installed)
 - Locking Cover (Factory Installed) \$871

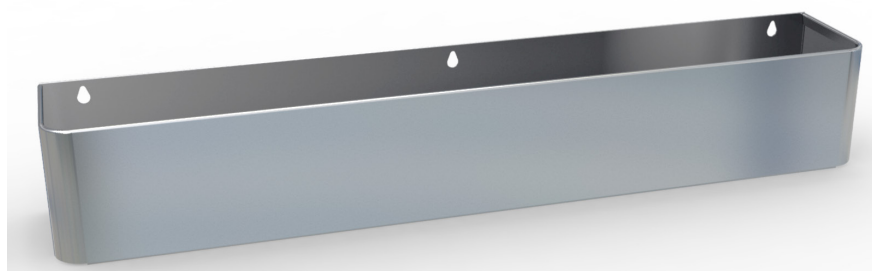


- Accessories:**
- Set of 4 Casters
L550-112814.....\$186

Description	Length	Weight	SK24	List Price	CL24	List Price
Bottle Storage Display	24"	60 lbs.	SK24BSD	\$1,738	CL24BSD	\$1,997

BOTTLE STORAGE CONTINUED

SPEEDRAILS KEYHOLE



Standard Features:

- Fastening Hardware Included for Field Installation
- Support Braces Standard for 48", 60", and 72" Double Keyhole Models

Description	Length	Weight	Single Speed Rail	List Price	Weight	Double Speedrail	List Price
Single Speedrail	18"	3 lbs.	L500-98018	\$134			
	24"	4 lbs.	L500-98024	\$149	8 lbs.	L500-98024-2	\$258
	30"	5 lbs.	L500-98030	\$166	10 lbs.	L500-98030-2	\$290
	36"	6 lbs.	L500-98036	\$186	12 lbs.	L500-98036-2	\$318
	48"	8 lbs.	L500-98048	\$274	16 lbs.	L500-98048-2	\$437
	60"	10 lbs.	L500-98060	\$314	20 lbs.	L500-98060-2	\$501
	72"	12 lbs.	L500-98072	\$357	24 lbs.	L500-98072-2	\$565
Drainboard Hanging Brackets		2 lbs.	L500-98BR1	\$130			
Ice Chest Hanging Brackets		2 lbs.	L500-98BR2	\$130			

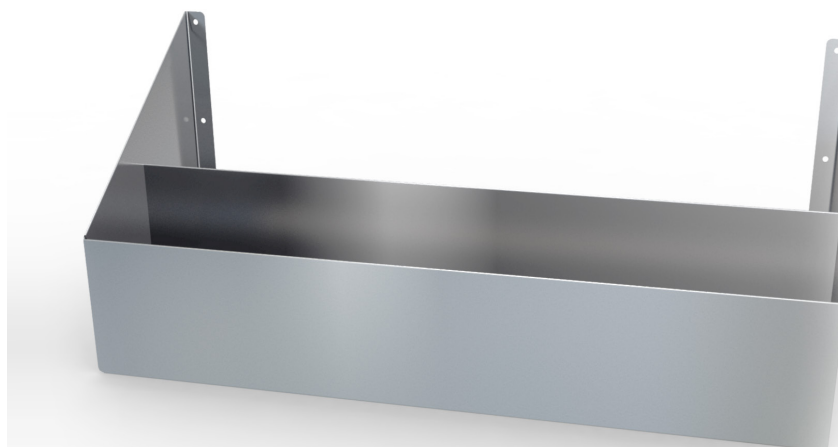
SPEEDRAILS - GUSSETED

Standard Features:

- Sound Dampening Plastic Rail Liner
- Fastening Hardware Included for Field Installation
- Support Braces Standard for 48", 60", and 72" Models

Options:

- 24", 30", and 36" Available with Locking Covers (Designated with the * Below)
- Custom Lengths Available



Accessories:

Locking Cover "-LC" (Single)

24"\$621

30"\$630

36"\$652

Locking Cover "-LC" (Double)

24"\$741

30"\$753

36"\$804

Description	Length	Wt.	Single Speed Rail	List Price	Wt.	Double Speedrail	List Price
Single Speedrail	18"	3 lbs.	L500-18 GSR	\$169	7 lbs.	L500-18 GSR-2	\$403
	24"	4 lbs.	L500-24 GSR*	\$191	8 lbs.	L500-24 GSR-2*	\$442
	30"	5 lbs.	L500-30 GSR*	\$212	9 lbs.	L500-30 GSR-2*	\$481
	36"	6 lbs.	L500-36 GSR*	\$232	10 lbs.	L500-36 GSR-2*	\$520
	42"	7 lbs.	L500-42 GSR	\$259	11 lbs.	L500-42 GSR-2	\$559
	44"	8 lbs.	L500-44 GSR	\$262	12 lbs.	L500-44 GSR-2	\$572
	48"	9 lbs.	L500-48 GSR	\$357	13 lbs.	L500-48 GSR-2	\$680
	60"	10 lbs.	L500-60 GSR	\$400	16 lbs.	L500-60 GSR-2	\$758
	72"	12 lbs.	L500-72 GSR	\$443	19 lbs.	L500-72 GSR-2	\$836
Support Brace		2 lbs.	L420-12001	\$44	2 lbs.	L420-11038	\$44

BEER STORAGE



Standard Features:

- False Bottom
- Removable Perforated Pans
- Includes Ice Bin Cover
- 6" Stainless Steel Equipment Legs

Options

- Set of (4) 5" Casters
(Replaces 6" Legs, Two Rigid and Two Swivel - Factory Installed)

Description	Height	Weight	Model	List Price
Beer Bin	19"	40 lbs.	CL-24ICAB-19	\$2,840
	31"	55 lbs	CL-24ICAB-31	\$3,040

Accessories:

Set of 4 Casters
L550-112814\$186

TROUGH

Standard Features:

- 24" Front to Back
- Includes Stainless Steel Sliding Covers (2)
- 18" Deep Ice Chest Trough
- 30" Working Height



Description	Length	Weight	Model	List Price
Trough	48"	150 lbs.	BB48	\$3,827
	60"	175 lbs.	BB60	\$4,197

GLASS MERCHANDISER



*Double panel shown.

Standard Features:

- 304 Stainless Steel
- One or Two Sided - Double Pane Glass Panels with Stainless Steel Trim
- Built in Petcock Valve Drain
- Includes 3 ft. of Clear Plastic Drain Tubing

Description	Length	Weight	Model	List Price
Single Panel	24"	30 lbs.	MDG24	\$1,994
	30"	35 lbs.	MDG30	\$2,076
	36"	40 lbs.	MDG36	\$2,161
	48"	45 lbs.	MDG48	\$2,285
Double Panel	24"	40 lbs.	MDG24-2	\$2,094
	30"	45 lbs.	MDG30-2	\$2,309
	36"	50 lbs.	MDG36-2	\$2,386
	48"	55 lbs.	MDG48-2	\$2,463

ADD ONS

STANDARD HANDSINK



Standard Features:

- 304 Stainless Steel
- Deep-Drawn Sink Bowl
10"x14"x9 3/4"
- Low Lead Compliant Faucet
- Recessed Top Tray

Options

- Sidesplash to Mount to Right or Left of the Unit

Accessories:

- Stainless Steel Legs (Upcharge)
L400-99S18-S 18" Height . \$338
- Perforated Basket
L500-11963 \$362
- Side Splash
L240-112815 (L, R) \$144
- Blender Shelf
L500-10558 \$238
- Towel Dispenser
L130-11425 \$248
- Soap Dispenser
L130-11192..... \$162

Description	Length	Weight	SD19	List Price	SK21	List Price
Handsink	12"	35 lbs.	SD12HS	\$1,624	SK12HS	\$1,766
	18"	40 lbs.	SD18HS	\$1,714		

HANDSINK WITH BUILT IN SOAP AND TOWEL DISPENSER

Standard Features:

- 304 Stainless Steel
- Deep-Drawn Sink Bowl
10"x14"x9 3/4"
- Low Lead Compliant Faucet
- Recessed Top Tray
- Built-In Soap Dispenser
- Built-In C-Towel Dispenser
- 304 Stainless Steel Legs

Accessories:

- Perforated Basket
L500-11963 \$362
- Side Splash
L240-112815 (L, R) \$144



Description	Length	Wt.	Model	List Price
with Built-In Soap and Towel Dispenser	12"	40 lbs.	CL12HS-ST	\$2,918

HANDSINK WITH BLENDER SHELF



Standard Features:

- 304 Stainless Steel
- Deep-Drawn Sink Bowl
10"x12"x6"
- Low Lead Compliant Faucet
- Recessed Top Tray
- Built-In 12"x9" Blender Shelf
- Electric Outlet Cutout Provided

Accessories:

- Stainless Steel Legs (Upcharge)
L400-99S18-S 18" Height . \$338
- Perforated Basket
L500-11963 \$362
- Side Splash
L240-112815 (L, R) \$144

Description	Length	Weight	SK21	List Price	CL24	List Price
	12"	40 lbs.			CL12RSCH	\$1,947
	18"	45 lbs.	SK18RSCH	\$2,002		

ADD ONS CONTINUED

HANDSINK DUMP SINK COMBO



Standard Features:

- 304 Stainless Steel
- Deep-Drawn Sink Bowls 10"x14"x9 3/4"
- Low Lead Compliant Faucets
- Recessed Top Tray
- 12" Drainboard
- 7" Splash Guard
- 3" Strainer Basket Drain

Options:

- Skirting to Hide Leg Assembly

Accessories:

Stainless Steel Legs (Upcharge)
L400-99S18-S 18" Height.....\$338

Perforated Basket
L500-11963\$362

Description	Length	Weight	Model	List Price
Handsink Combo	36"	80 lbs.	SK3-HS21 (L,R)	\$3,461
Skirt	36"	20 lbs.	L500-11887	\$439

HANDSINK WITH TRASH RECEPTACLE

Standard Features:

- 304 Stainless Steel
- Deep-Drawn Sink Bowls 10"x14"x9 3/4"
- Low Lead Compliant Faucet
- Recessed Top Tray
- 6"x4" Trash Hole
- 6" Stainless Steel Equipment Legs
- Locking Cabinet Door
- Built-In Trash Receptacle (*Trash Can Sold Separately)



Description	Length	Weight	Model	List Price
Handsink w/ Trash Receptacle	18"	65 lbs.	CL18HS-TRA	\$2,678

TRASH RECEPTACLE



Standard Features:

- 304 Stainless Steel
- Locking Door
- Attaches to Adjacent Units
- 12" Unit Designed to Attach to One Adjacent Units (No Legs).
- 14" Unit Designed to Attach to One Adjacent Unit & Free Standing on the Other (One 18" Leg). Specify Right or Left.
- Includes Sliding Trash Cover

Description	Length	Weight	Model	List Price
Trash Receptacle	12"	25 lbs.	CL12TRA	\$1,290
	14"	30 lbs.	CL14TRA (L,R)	\$1,585

*Shown with optional sliding cover.

ADD ONS CONTINUED

BEER DRAINER



Standard Features:

- 304 Stainless Steel
- Removable Perforated Pan with Drain
- Built-In Chase for Beer Dispensing Tower
- 11" Front Apron
- 15" Stainless Steel Legs

Description	Length	Weight	SD19	List Price	CL24	List Price
Beer Drainer	24"	45 lbs.	SDP24-BD	\$1,533	CLP24-BD	\$1,599

EQUIPMENT STAND

Standard Features:

- 304 Stainless Steel
- 18" Backsplash with 3/4" Turnback
- Recessed Top Tray with Built-In Drain
- Open Cabinet Base
- 6" Stainless Steel Equipment Legs



Description	Length	Weight	Model	List Price
Equipment Stand	18"	40 lbs.	CL18ES	\$1,599
	24"	50 lbs.	CL24ES	\$1,700

DRAINBOARDS AND DRINK RAILS

DRAINBOARDS



*CLW24 Removable pan CL unit shown.

Standard Features:

- 304 Stainless Steel
- Drain can be Located in Either End, but will be Mounted Left Unless Otherwise Indicated

SD19 Units:

- Standard Corrugated Drainboard Top with Drain
- Galvanized Legs

CL Units:

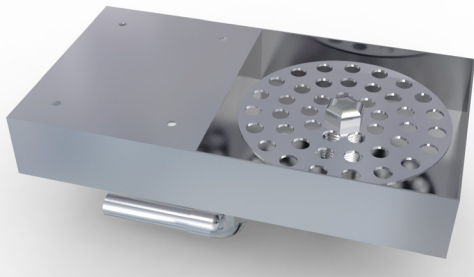
- Removable Perforated Pan with Drain
- 304 Stainless Steel Legs

Description	Length	Weight	SD19	List Price	CL24	List Price
Drain Board	12"	25 lbs.	SDW12	\$1,189	CLW12	\$1,543
	18"	30 lbs.	SDW18	\$1,243	CLW18	\$1,597
	24"	35 lbs.	SDW24	\$1,408	CLW24	\$1,704
	36"	45 lbs.	SDW36	\$1,640	CLW36	\$1,862

Accessories:

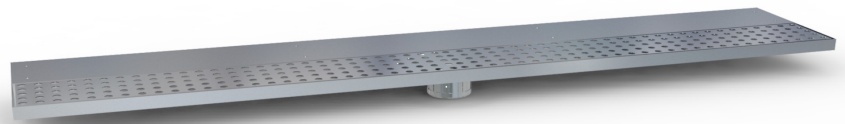
Stainless Steel Legs (Upcharge)
L400-99S18-S 18" Height.....\$338

DRINKRAILS AND GLASS RINSER



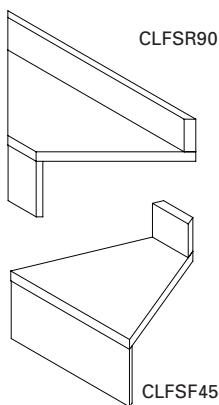
Standard Features:

- 304 Stainless Steel
- 4" Drink Rail Trough with 4" Underbar Mount Support
- Includes Drain in the Center
- Removable Perforated Pan
- 10 ft. Drain Tube



Description	Length	Weight	Model	List Price
Drip Tray	24"	10 lbs.	DR24-8	\$313
	36"	15 lbs.	DR36-8	\$349
	42"	20 lbs.	DR42-8	\$502
Glass Rinser	5"x9"	5 lbs.	GR5-9	\$531

FILLERS, CHASES, AND SODA GUN HOLDERS



Standard Features:

- 304 Stainless Steel
- Designed to Attach to Adjacent Units
- Front and Rear Fillers are Available in 45 and 90 Degree Units

Customization available.

Make your filler section more functional by adding in a Perforated Pan, Glass Rinser, or Cutting Board.

Contact Factory for Quote.

Description	Weight	SD19	List Price	SK21	List Price	CL24	List Price
Front	25 lbs.	SDFSF (45, 90)	\$858				
Rear	25 lbs.	SDFSR (45, 90)	\$858				
Corner	25 lbs.	SDDC90FS	\$996				
6" Spacer	15 lbs.	SDSP6	\$509	SKSP6	\$558		
6" Spacer with Chase	15 lbs.	SDSP6-CH	\$509	SKSP6-CH	\$558		
6" Soda Gun Holder	25 lbs.	SDSP6-SGH	\$1,091	SKSP6-SGH	\$1,091	CLSP6-SGH	\$1,091

WALL MOUNT HANDSINK

Standard Features:

- 10 5/16"x12 5/8"x4" Deep Sink
- Includes Splash Mount Low Lead Compliant Faucets
- Includes 1 1/2" Drain and Mounting Brackets

Options:

- Side Splash Available

Accessories:

Perforated Basket
L500-11963 \$362

Side Splash
L240-112815 (L, R) \$144



Description	Length	Weight	Model	List Price
WallMount Handsink	14"	14 lbs.	HS-WMS	\$816

CORNER UNIT WITH PERFORATED PAN



Standard Features:

- 304 Stainless Steel
- Corner Filler Unit to Join Two SK21 or CL24 Units
- Removable Perforated Pan with Drain
- 12" Front Apron with 18" Legs

Description	Length	Weight	Model	List Price
Corner Filler	24"x24"	40 lbs.	SKDC90	\$2,115

Accessories:

Stainless Steel Legs (Upcharge)
L400-99S18-S 18" Height..... \$338

DROP-IN ICE CHESTS

DROP-IN ICE CHESTS



Standard Features:

- Includes Stainless Steel Sliding Cover
- 11" Deep Ice Bin
- Bottle Storage Trays Sold Separately

Options:

- 18" Available with 4 Circuit Cold Plate
- 24"-36" Available with 8 or 10 Circuit Cold Plate
- 14" Deep Bins Available

NOTE: 12" Not Available with Cold Plate

Accessories:

Cold Plate Options:

4 Circuit Cold Plate.....	\$2,015
8 Circuit Cold Plate.....	\$2,152
10 Circuit Cold Plate	\$2,301

14" Deep Option:

24"	\$648
30"	\$779
36"	\$846

Bottle Tray

L130-12002	\$75
------------------	------

Description	Length	Weight	Model	List Price
Drop-In Ice Chest	12"	25 lbs.	DI12IC	\$1,401
	18"	30 lbs.	DI18IC	\$1,236
	24"	35 lbs.	DI24IC	\$1,724
	30"	40 lbs.	DI30IC	\$1,852
	36"	45 lbs.	DI36IC	\$1,944

DROP-IN WATER STATION

Standard Features:

- 10"x6"x6" Sink with 1 1/2" Drain
- 12"x12" Insulated Ice Bin Holds 30 lbs. of Ice
- Removable Anti-Splash Grid
- Pushback Low Lead Faucet



Description	Weight	Model	List Price
Drop-In Bin w/Waterstation	35 lbs.	DI-WS-IB	\$2,541

DROP-IN SINKS



Standard Features:

- 304 Stainless Steel
- 3" Strainer Basket Drain with Strainer Basket
- Bowl Size 10"x14"x9 3/4"
- Low Lead Faucet to Counter Mount

Description	Length	Weight	Model	List Price
Drop-In Sink	4 ft.	40 lbs.	DI43CD	\$2,387
	5 ft.	40 lbs.	DI53CD	\$3,234

Accessories:

3" Deck for Faucet.....\$386

DROP-IN CONCESSION SINK

Standard Features:

- Includes Deck Mount Low Lead Faucet
- Bowl Size is 6"x12"x6" Deep
- 3" Drains with Strainer Baskets

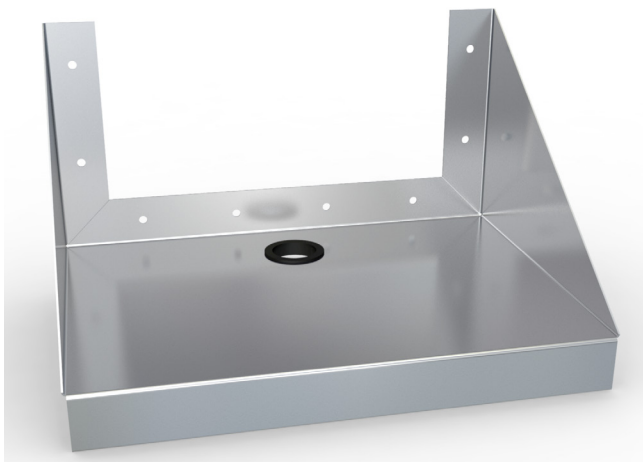
Options:

- Gooseneck Low Lead Faucet



Description	Length	Weight	Model	List Price
Concession Sink	24 3/8"	20 lbs.	CS3DI	\$1,374

SHELVES



Description	Length	Weight	Model	List Price
POS Shelf	14"	10 lbs.	KS14M	\$254
Microwave Shelf	24"	15 lbs.	KS24M	\$456

Standard Features:

- 304 Stainless Steel Construction
- Grommet Hole for Cord



THE STOWAWAY® PORTABLE BAR



STORAGE VIEW



OPEN VIEW

Standard Features:

- Vinyl Clad Aluminum Exterior
- 24" Ice Bin Includes Cover
- Stores On End in a 2ft Space
- Heavy Duty Casters
- Lockable Cabinet Latches
- 304 Stainless Steel Work Surface
- Storage Bumpers
- Perimeter Trim Bumper
- NSF Approved Ice Bin
- Holds 95 lbs. of Ice
- See StowAway spec sheet for additional information and accessories

Portable Bar		Model	List Price
Black	Basic Black	PB5-24IB-TBK	\$8,026
Custom Finish	Carmine Cherry	PB5-24IB-WCC	\$8,376
	Manhattan Walnut	PB5-24IB-WMW	\$8,376
	American Natural	PB5-24IB-WAN	\$8,376
	Russian Maple	PB5-24IB-WRM	\$8,376
	Boston Cherry	PB5-24IB-WBC	\$8,376
	White	PB5-24IB-FFW	\$8,376

Accessories		Model	List Price
Storage Cover		L130-11400	\$770
Handsink with Reservoir		L500-11686	\$1,766
Condiment Tray	5 Trays	L500-10564	\$964

FROM OPEN TO CLOSED



1.



2.



3.



4.

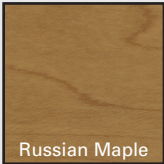
Custom Laminate Colors:



American Natural



Carmine Cherry



Russian Maple



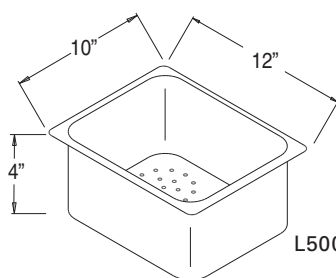
Frosty White



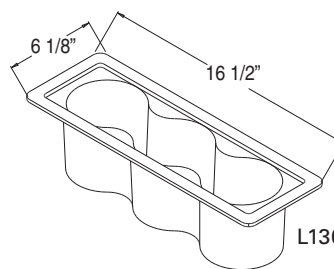
Manhattan Walnut

ACCESSORIES

	Part Number	Description	Weight	List Price
Low-Lead Faucets:	L130-34D08L	Faucet, Low Lead, 8" Spout, Deck Mount, 4" Centers	3 lbs.	\$276
	L130-34GN6L	Faucet for Pass Thrus, Low Lead	3 lbs.	\$276
	L130-34D12L	Faucet, Low Lead, 12" Spout, Deck Mount, 4" Centers	3 lbs.	\$276
	L130-34GN4L	Faucet, Low Lead, 4" Spout, Deck Mount, 4" Centers	3 lbs.	\$282
	L130-34W06L	Faucet, Low Lead, 6" Spout, Wall Mount, 4" Centers	3 lbs.	\$276
	L130-34W10L	Faucet, Low Lead, 10" Spout, Wall Mount, 4" Centers	3 lbs.	\$276
	L130-34WGN4L	Faucet, Low Lead, Wall Mount 4" Centers	3 lbs.	\$276
	L130-30PB1L	Faucet, Low Lead, Push Back, Pedestal Mount, 4" Centers	3 lbs.	\$317
	L130-11517	Wrist Handles, Faucet Accessory, Wrist Handles & Cap, Splash or Wall Mount	1 lbs.	\$115
Covers	L500-90C36-TB	Cover Sliding, 304 Stainless Steel, 36", Cocktail, Top & Bottom	6 lbs.	\$322
	L400-90I18-TB	Cover Sliding, 304 Stainless Steel, 18", IC, Top & Bottom	4 lbs.	\$322
	L400-90I24-TB	Cover Sliding, 304 Stainless Steel, 24", IC, Top & Bottom	5 lbs.	\$322
	L400-90I30-TB	Cover Sliding, 304 Stainless Steel, 30", IC, Top & Bottom	6 lbs.	\$322
	L400-90I36-TB	Cover Sliding, 304 Stainless Steel, 36", IC, Top & Bottom	7 lbs.	\$322
	L400-90I48-TB	Cover Sliding, 304 Stainless Steel, 48", IC, Top & Bottom	8 lbs.	\$322
	L400-90PT36	Cover Sliding, 304 Stainless Steel, 36", 3-piece, Pass-Thru	13 lbs.	\$518
	L400-90PT42	Cover Sliding, 304 Stainless Steel, 42", 3-piece, Pass-Thru	14 lbs.	\$532
Legs	L400-99S18	Leg Assy, 18" Standard Height, 1pr. (2-2 Leg Sets)	15 lbs.	\$145
	L400-99C15	Leg Assy, 15" Cold Plate Height, 1pr. (2-2 Leg Sets)	19 lbs.	\$138
	L400-99S18-S	Leg Assy, 18" 304 Stainless Steel, Standard Height, 1pr. (2-2 Leg Sets)	17 lbs.	\$515
	L400-99D24-S	Leg Assy, 24" Stainless, Deli Height, 1pr. (2-2 Leg Sets)	19 lbs.	\$613
	L400-99C15-S	Leg Assy, 15" 304 Stainless Steel, Cold Plate Height, 1pr. (2-2 Leg Sets)	21 lbs.	\$456
Drains	L130-10546	Drain Assembly 1.5"	2 lbs.	\$32
	L500-10547	Drain Assembly 1"	1 lbs.	\$29
	L130-10548	Drain Assembly with 3" Strainer Basket	3 lbs.	\$62
Trays	L130-12002	Bottle Tray, 3 hole, Bottle Storage Compartment	5 lbs.	\$75
	L500-10564	Condiment Tray, 5, with Holder	14 lbs.	\$964



L500-11963 Perforated Pan



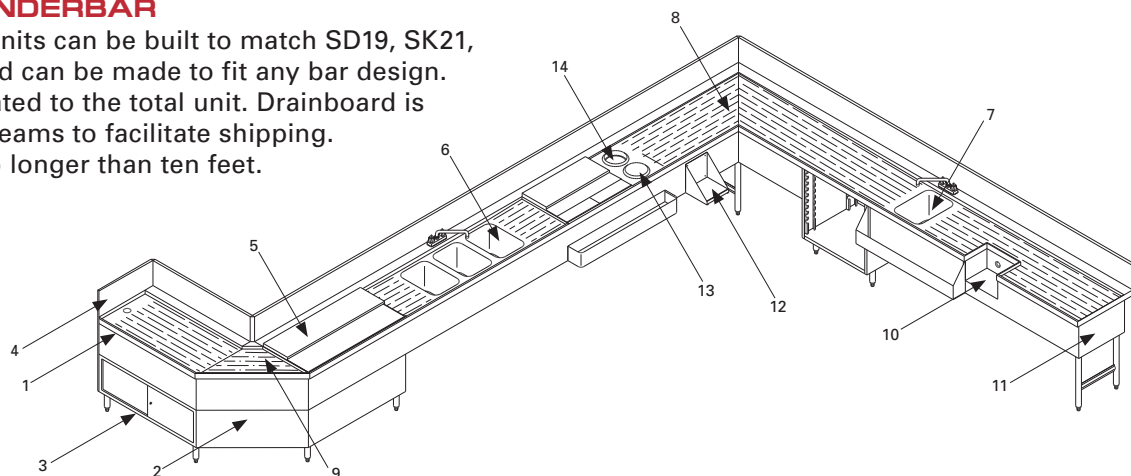
L130-12002 Bottle Trays

	Part Number	Description	Weight	List Price
Sink Accessories	L500-11963	Perforated Basket, 10" x 12" x 6", 304 Stainless Steel, with Adapter	5 lbs.	\$362
Vendor Parts	L130-10549	Grommit, for 1" Overflow Tube (Grey)	1 lb.	\$8
	L130-10568	Overflow Pipe, 8 1/2", for 1 1/2" Drain	1 lb.	\$48
	L130-10545	Overflow Pipe, 10", for 1" Drain	1 lb.	\$34
	L130-11277	Stopper, 1 3/4" Rubber	1 lb.	\$10
	L130-11425	Folding Towel Dispenser	5 lbs.	\$248
	L130-11192	Soap Dispenser	5 lbs.	\$162
Miscellaneous	L500-10558	Drop Down Blendershelf - 12" W x 9" D	10 lbs.	\$238
	L240-10024	304 Stainless Steel Ice Chest Divider 15" W X 10" D	1 lb.	\$170
	L240-112813A	Extra Deep - 304 Stainless Steel Ice Chest Divider 15" W X 14" D	2 lbs.	\$202
	L130-12016	Dipper Well, 1 1.5" Drain Assy.	3 lbs.	\$410

CUSTOM CONFIGURATIONS

CUSTOM BUILT UNDERBAR

Specifically fabricated units can be built to match SD19, SK21, or CL24 construction and can be made to fit any bar design. Components are integrated to the total unit. Drainboard is divided at appropriate seams to facilitate shipping. Shipped sections are no longer than ten feet.



HOW TO PRICE CUSTOM BUILT UNDERBAR

- Start by computing the length of each individual workspace by measuring both the front apron and the backsplash (use the longest of the two).
 - Next determine Underbar series SD19, SK21, or CL24.
 - Add each construction feature as shown. Spaces left open will be filled with drainboards.
 - Choose your accessories. All orders must include detailed sketch. We will furnish a final drawing for your approval before beginning fabrication. All orders are subject to final factory approval for pricing accuracy.
- A one-third (1/3) deposit is required before construction can begin.**

Item Number	Description	SD19	SK21	CL24
Start with	Workspace (min. 3 ft.) (per lin. ft.)	\$1,500 per ft.	\$1,500 per ft.	\$1,500 per ft.
	- Space not filled with other items will be Drainboard (1.)			
Accessories				
2.	304 Stainless Steel Removable or Hinged Apron (per lin. ft.)	\$194	\$194	\$194
3.	Workboard Base on 6" Legs (per lin. ft.) Base on Cabinet Pricing	\$452	\$452	\$452
4.	Endsplash (Sidesplash must specify L or R)	\$144	\$144	\$144
5.	Built-In Ice Chest w/Stainless Steel Sliding Cover			
	24"W x 11" Deep	\$1,541	\$1,541	\$1,541
	30"W x 11" Deep	\$1,678	\$1,678	\$1,678
	36"W x 11" Deep	\$1,856	\$1,856	\$1,856
6.	Sinks 10" x 14" x 9 1/2" (ea.)			
	Includes Drain Assy. & Overflow Tube	\$480	\$480	\$480
7.	Waste or Hand Sink w/3" Strainer Basket (ea.)	\$708	\$708	\$708
8.	Stainless Steel End (Included in Item 1)	Std.	Std.	Std.
9. L500-10558	Drop Down Blender Shelf 12"x 9"	\$261	\$261	\$261
10.	6" Waste Chute Installed	\$202	\$202	\$202
11.	6" Waste Container w/Removable Receptacle & Drain Installed	\$652	\$652	\$652
Additions Not Shown				
	Cut Out for Beer & Soda Lines Sleeved Slot (3"x 6")	\$202	\$202	\$202
L240-10024	304 Stainless Steel Ice Chest Divider	\$170	\$170	\$170
L400-99D24-S	Extra Height Legs (36" Working Height) (2 Leg Set) CD	\$613	\$613	\$613
L500-10564	Set of Five Condiment Trays w/Holder	\$964	\$964	\$964
	Perforated Bottom Pan (per lin. ft.)	\$130	\$130	\$130

FACTORY DRAWINGS FOR YOUR APPROVAL

The LaCrosse Design Group can provide factory CAD (Computer Aided Drafting) drawings for customer approval. Email, text, or fax your job sketches/drawings to our business address, "Attn: LaCrosse Sales Department". Please include:

1. Equipment list.
2. Appropriate dimensions and/or scale of drawing.
3. List of required accessories.
4. Name and phone number of contact person.
5. Date drawing required.

A CAD library is also available upon request at no charge. LaCrosse products are also featured in Autoquotes and KCL.

Clearly indicate your requirements:

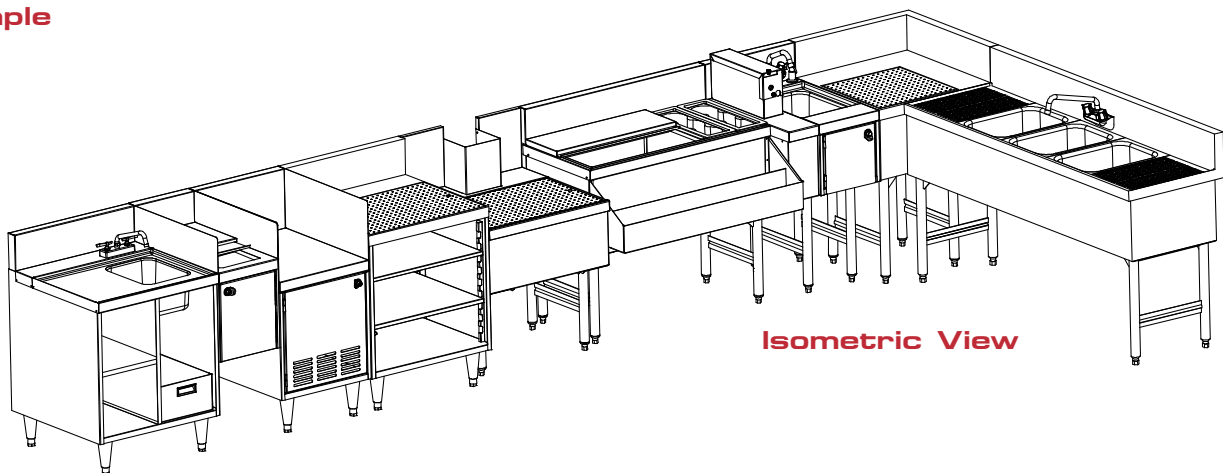
▣ Plan View ▣ Isometric Views of Equipment



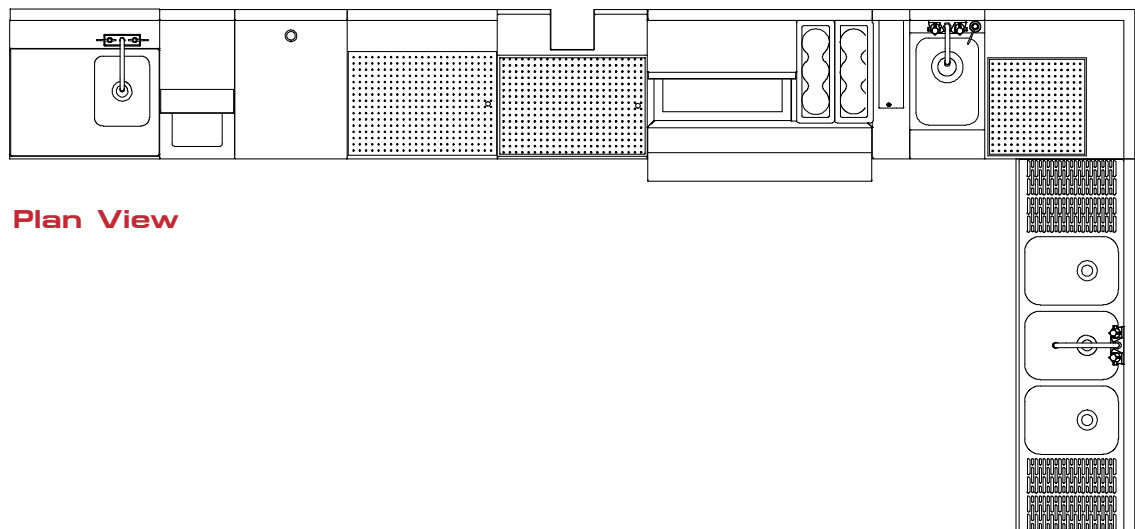
BIM | CAD | MOBILE

Remember, accurate drawings (formally approved) are the key to satisfied customers.

Example



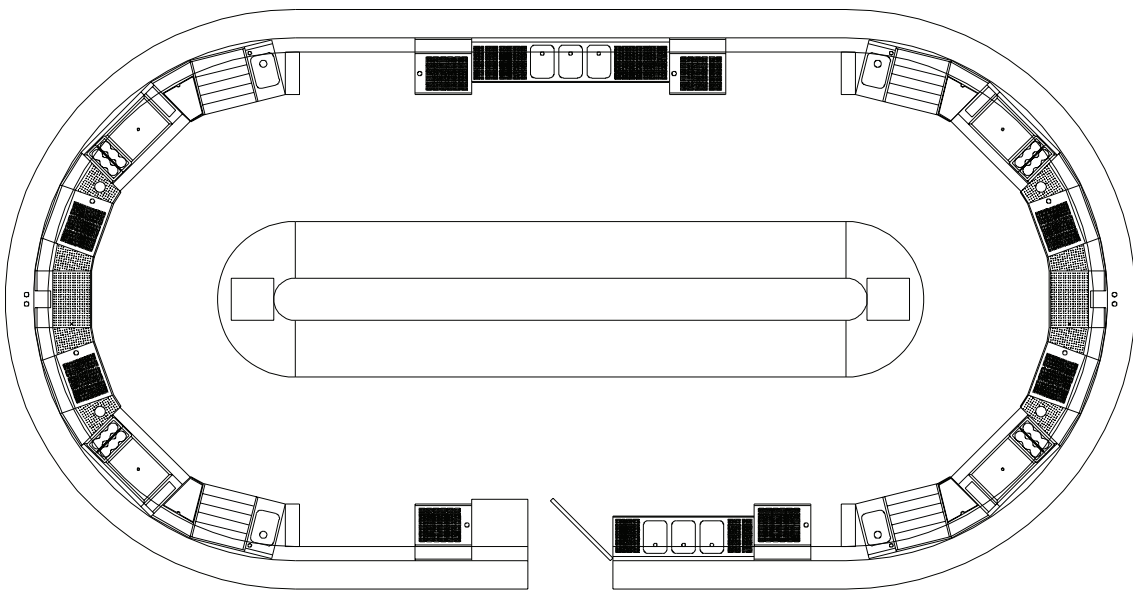
Isometric View



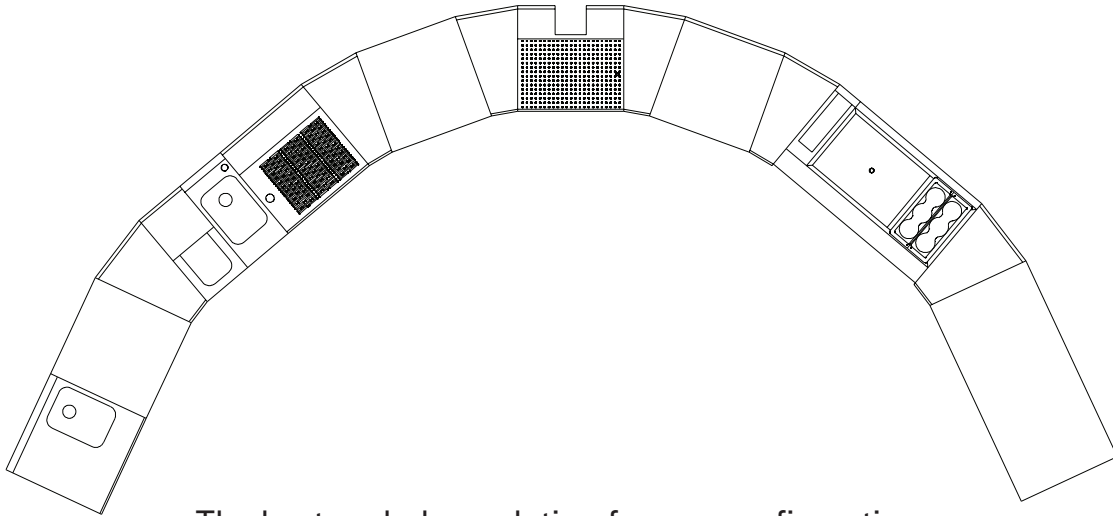
Plan View

10 - Day Lead Time, Every Order

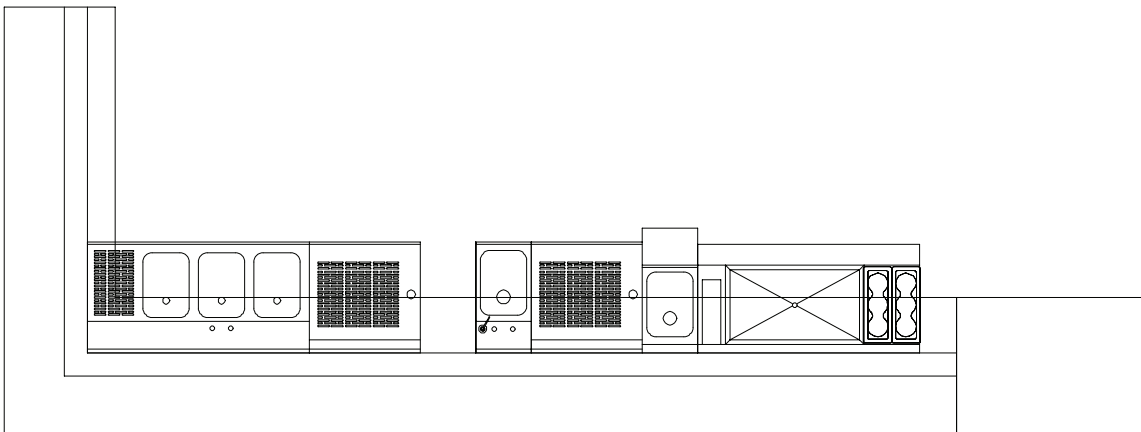
DESIGN YOUR BAR LAYOUT FOR FUNCTIONALITY & INCREASE PROFITABILITY!



48 hour bar layout turnaround with Auto Quote.



The best underbar solution for any configuration.



Keep customers coming back.



LACROSSE

by **PIPER**

Visit www.lacrossecooler.com to discover our complete line of underbar equipment solutions.

300 S. 84th Avenue
Wausau, WI 54401
Phone: 800-544-3057
Fax: 715-842-3125
www.lacrossecooler.com

CFSBRANDS.